



SANTIAGO MURIEL PEREZ

CONTACT

(+61) 424 645 117
@lighthouse.interiors
lighthouseinteriordesign.com

LANGUAGES

English
Spanish

ACHIVEMENTS

Zoom Lab with John A. Chakere (Space Shuttle Program Photographer) 2013

Zoom Lab with Elaine Ling (National Geographic Photographer) 2015

PROFILE

Hello, my name is Santiago, and I am a recent graduate of Torrens University (Billy Blue), with a Bachelor's degree in Interior Design - Residential. My passion for art and design has been a driving force in my life, shaping my perspective on design as an art form that creates experiences and reflects the unique identities of its inhabitants.

As a dedicated designer, I believe that good design has meaning and a story to tell. I am eager to expand my knowledge in the industry and explore innovative solutions that enhance both functionality and emotional connection while bringing a distinct and unique perspective to each project.

I am committed to learning and exploring a world where colour and innovation collide to create memorable spaces. My goal is to craft environments that inspire connection and harmony, leaving a lasting impact on those who experience them.

A POEM

I am a lighthouse, steadfast and bright,
Casting beams through the depths of dark.
I am a lighthouse, for sailors and shores,
Guiding them home to safe harbors once more.

Near every harbor, a light will rise,
A steady star beneath vast skies.

I am the sage, with grace and care,
Uncovering truths in the voices of air.
I am the explorer, boundless and free,
Mapping new paths across uncharted sea.

A light, a friend, for those who roam—
A beacon to guide them safely home.

EDUCATION

Torrens University (Billy Blue)
Bachelor of Interior Design - Residential
2023 - 2025

Australian Pacific College
Advanced Diploma of Interior Design
2022

Australian Pacific College
Diploma in Interior Design
2021

Australian College of Business
Intelligence
Advanced Diploma of Digital Marketing
2020

Australian College of Business
Intelligence
Diploma of Social Media Marketing
2019

Australian College of Business
Intelligence
Certificate IV in Marketing and Communication
2018

Institución Universitaria Salazar y Herrera
- IUSH
Advanced Diploma of Graphic Design
2013 - 2016

SKILLS

SketchUp	Team Work
Revit	Organisation
Enscape	Time management
AutoCAD	Research
Illustrator	Problem Solving
3ds Max	Innovation

EXPERIENCE

MADE BY S
Design Freelance
2020 - Today

SAGE INTERIOR DESIGN STUDIO
Internship
2024

REFEREES

Shannon Biala
Sage Interior Design
Interior Designer
+61 450 651 312

Lorenzo Vettore
Tequila Mockingbird
General Manager
+61 434 547 713

Kathleen Morales
Fratelli Fresh
General Manager
+61 450 351 712

**RAINHEART
RESIDENCE**

A collection of Chanel items is displayed on a light-colored, textured surface. The items include a large, cream-colored rectangular box with a black border and the Chanel logo in the center; a red embroidered flower brooch; a small, dark, square-shaped box with the Chanel logo; a black lipstick tube with a silver band; and three gold-toned jewelry pieces, including a square brooch and two long, thin earrings.

A collection of various material samples arranged on a light background. The samples include a gold-colored material with vertical ridges, a white material with a wavy, textured surface, a gold-colored material with a smooth, rounded rectangular shape, a white material with a grid pattern, and a gold-colored material with a smooth, rounded rectangular shape. There are also several other materials in shades of gold, silver, and white, some with smooth surfaces and others with textures like marbling or fine lines.

the upper north side



EVERHEART STUDIO

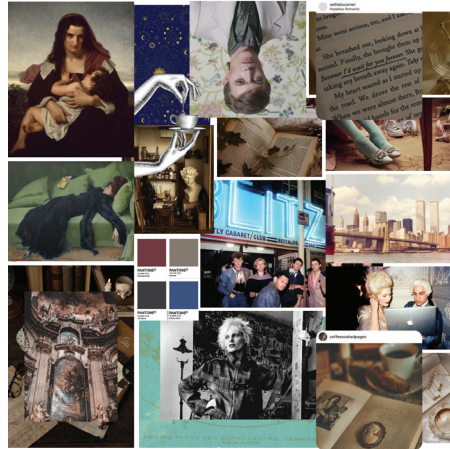
Situated at 203/317 New Street in Brighton, the Everheart Studio reimagines traditional design into a vibrant retreat that embodies the unique sensibilities of Lisa and Max Everheart.

Infused with the spirit of New York City's dynamic culture and the elegance of Victorian literature. This exquisite fusion of contemporary sophistication and historical allure sets a captivating stage for a life rich in artistry and charm.

 lissiseverheart



THE CONCEPT

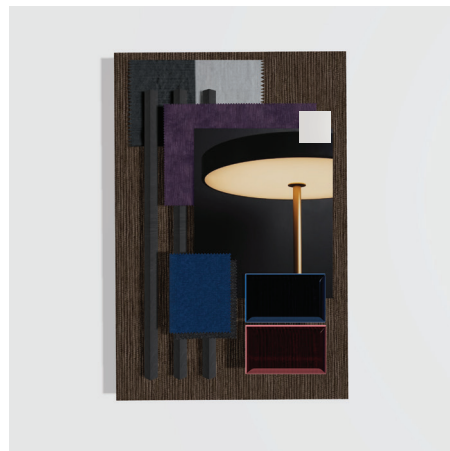


"The Unfashionable New Romantics"

A manifesto of bold dark colours, juxtaposed aged-time elements and overlapped geometric elements that create an evolving experience, dissociating from reality and achieving an environment that feels like an oasis of freedom.

A place for a riot, a place for a tale.

MATERIALS



NOT A MOOD BOARD



FLOOR PLAN



LINCOLNHEART MAISONETTE

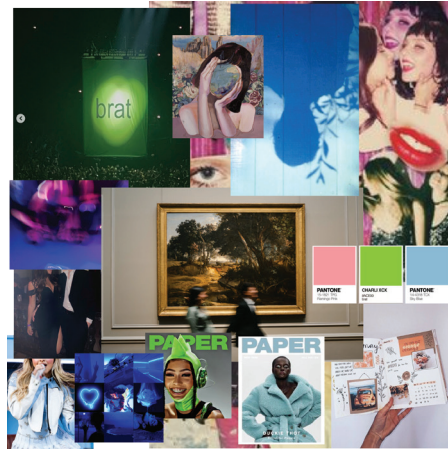
The Lincolnheart Maisonette, located at 545/46 Baywater Drive, Wentworth Point, NSW 2127, transforms a duplex apartment into a vibrant art gallery.

Created for art collectors with a passion for contemporary design, the space blends creativity and bold features, making each room a unique statement. Notable elements include a white canvas entry, a striking green staircase, a contrasting marble table, and a wood kitchen, all contributing to an art-inspired, visually impactful living environment.

thats_sojulia
London, United Kingdom



THE CONCEPT

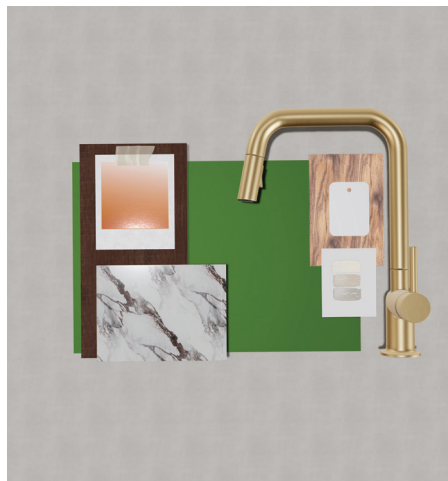


"AAA"

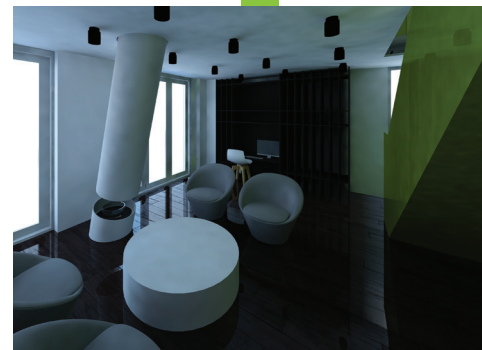
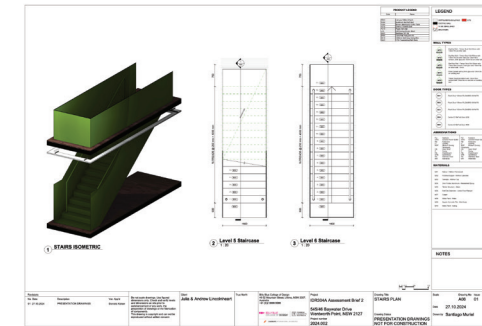
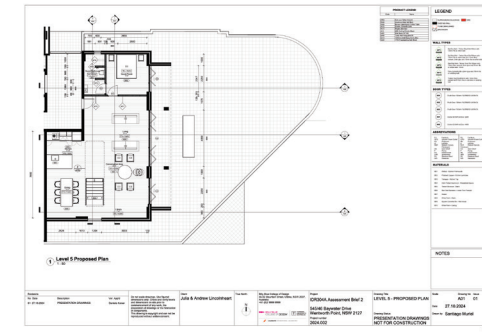
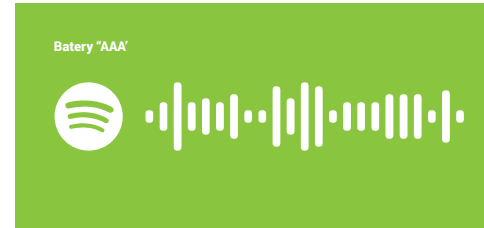
Being here is pure energy—art that lives, not just hangs on walls. It's high voltage, always pushing limits and keeping you on your toes.

From raves to Hills vibes, it's a nonstop ride of inspiration and surprises. Here, being a BRAT is a vibe, and you'll never know what's coming next.

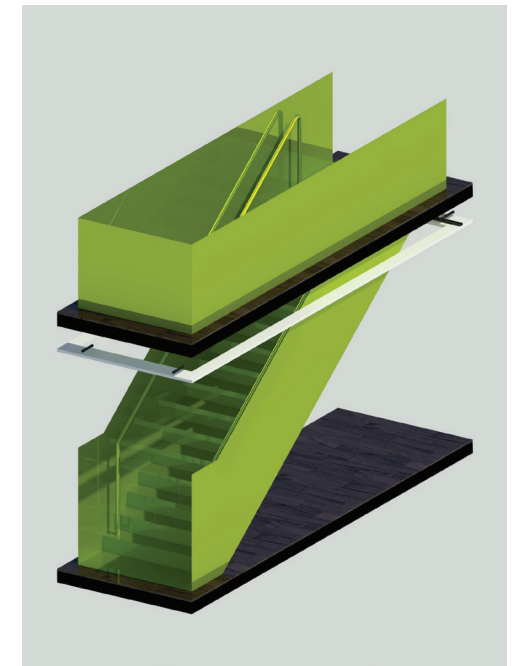
MATERIALS



NOT A MOOD BOARD



AS SEEN ON DEZEEN



IVEHEART APARTMENT

The Ivyheart Apartment at 46-52 Mountain Street reimagines a heritage duplex into a refined sanctuary for discerning design aficionados. A stunning cherry metallic staircase, serves as a striking centrepiece, while the warm brown hues of the inviting living room offer a graceful contrast.

This exquisite blend of historical charm and contemporary style epitomises Ivyheart's luxurious aesthetic.

andrew.ivy.heart



THE CONCEPT



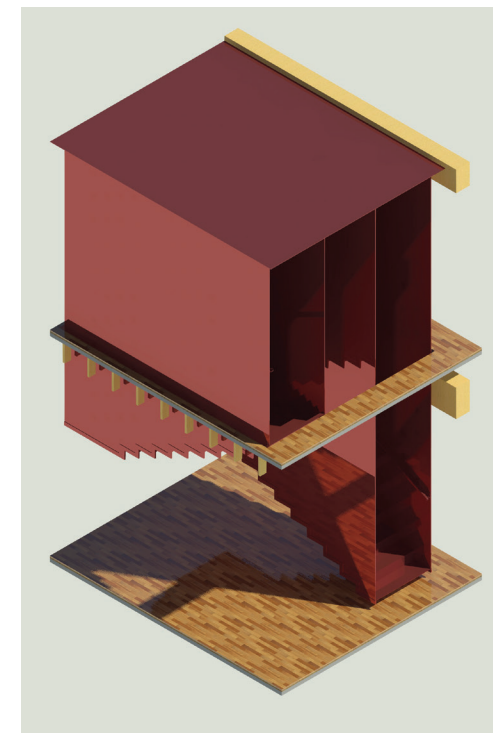
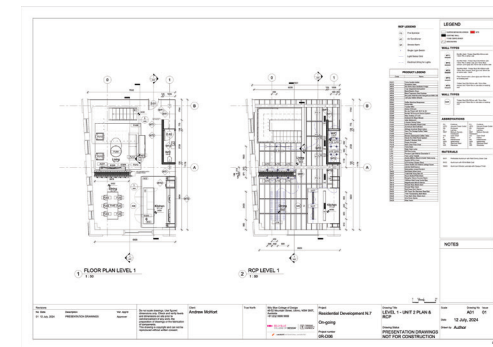
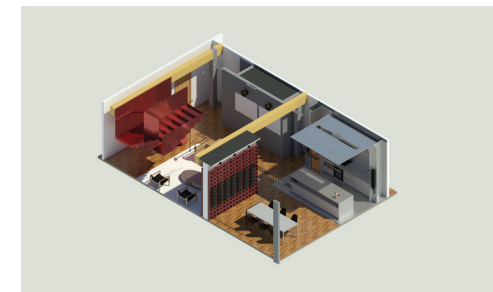
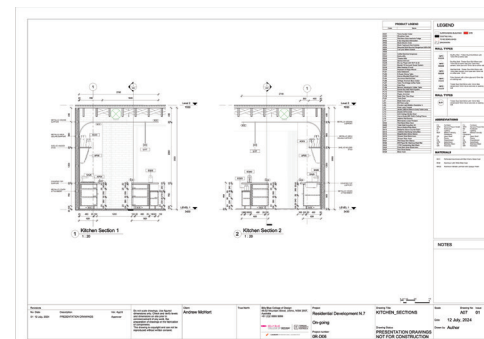
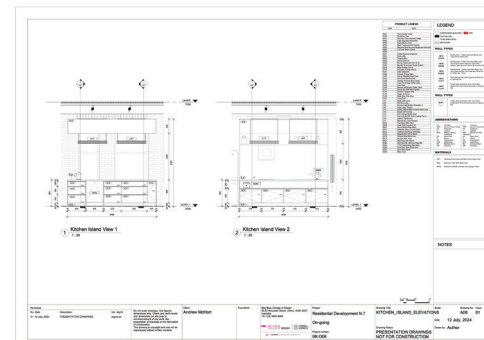
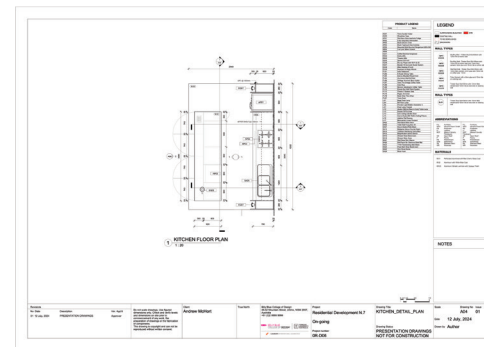
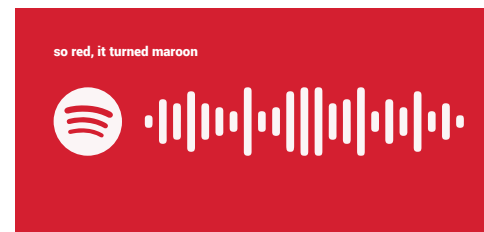
"And so, from the beginning, red to transform, red to love, and red to impress. I remember us running through autumn, cherishing moments of timeless acts in maroon."

And when we close our eyes, red is the impulse of our intentions. Red is the echo in the lights and the marks we left behind. And in the end, we were always red." A

MATERIALS



NOT A MOOD BOARD



**ULTERIORHEART
TERRACE**

This vibrant home presents a bold fusion of whimsy and sophistication, transforming the terrace into a true architectural marvel.

A person wearing a white jacket is seated at a keyboard on a stage. The scene is illuminated with blue light, creating a cool, atmospheric effect. The person's hands are positioned on the keys, and the overall composition is centered.

[illegible]

A realm where light and shadow entwine, the domain of Galinda herself, veiled in a mist of bubblegum hue. Here, colour assumes a deeper and more mysterious form, where whimsy and refinement are brought into delicate union, and the vibrant succumbs to the enigmatic—an experience where the realms of Oz and the moon align, all written in golden stars.

[illegible]

the bubblegum crescendo

